



 **WINGTEGRA**

Fully Customized uPVC French Doors, 4700 System

Made in Canada

<https://www.wintegra.ca>

604-776-0898



Passive House Certified

Performance Summary

Double Pane:

- U-Value: 1.31-1.35
- SHGC: 0.22-0.39
- VT - 0.43 - 0.56

Triple Pane:

- U-Value: 0.81-1.06
- SHGC: 0.17-0.36
- VT - 0.33 - 0.5

Quiet Space and Piece of Mind

Noise can be both disruptive and detrimental to health over time. Enhance occupants' sense of well-being with unparalleled noise protection.



85 dB

Loud street noise

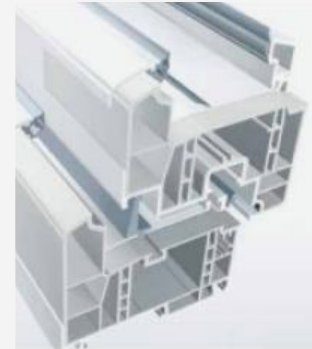
Geneo PH

Up to 45 dB

40 dB

Quiet Interior

GENEO PH and Classic: Uniquely Efficient



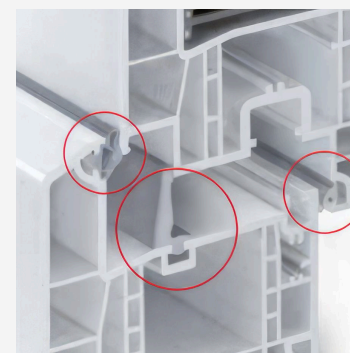
RAU-FIPRO profile core

Glass-fiber reinforced uPVC. Achieves excellent stability and torsional rigidity making it possible to build larger windows without the typical steel reinforcement that compromises thermal insulation.



Six-chambered frame

Provides unmatched thermal insulation, surpassing all Step Code requirements and making the achievement of Passive House standards possible



Compression-seal technology

Reduces closing pressure significantly, making window operation smooth and extending the service life. The three seals are strategically located to provide maximum insulation, while the highly elastic stress-resistant material guarantees a long service life.



Warm Superspacer

Our warm Super Spacer guarantees maximum edge warmth retention. Virtually eliminates window condensation. Provides superior structural integrity and durability. All while providing a 3/16" sightline - a preferred choice among designers and architects for its beautiful aesthetics.



RAU-FIPRO is an exceptional breakthrough that combines elegance and performance into one remarkable material.

RAU-FIPRO Fiberglass Composite

Individually, fiberglass and uPVC have distinct advantages- but together, they transform into a superior material without any downsides of either. RAU-FIPRO is a groundbreaking one-of-a-kind formulation that brings you the best of both worlds.



33% Bigger

Without the need for reinforcements

vs uPVC windows



Designed For Zero Leakage

Welded corners for ultimate durability

vs fiberglass windows with mechanical corners



2X Stronger

Infusion of high-tech composite at its core

vs uPVC windows



>10% Better Thermal Performance

Without efficiency-compromising reinforcements

vs uPVC with metal reinforcements

Increase The Value
of Your Investment



Wood Grains

Combining the authentic look and unique character of wood with the advantages of uPVC and fiberglass composite windows, this foil is virtually identical to natural wood. Its deep embossing and matte finish create a texture that convincingly mimics real wood.



Aluminum Look

Aluminum-like foils offer an attractive surface with a distinctive, fine-grained matte finish that resembles powder-coated aluminum. This design is perfect for contemporary, minimalist spaces.



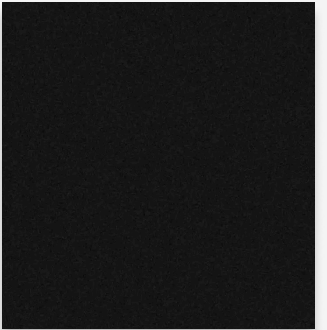
High Tech Foil Technology

Experience the difference with Wintegra Windows, where our craftsmanship shines. All our profiles come in base white and can be laminated on outside and inside. The foiling process permanently bonds profile with colour, achieving a perfect look of powder-coated aluminum, brushed steel, stained/ painted wood, or any other colour.

Matte Jet Black Classic

A favorite among designers and builders, the jet black matte color adds an elegant touch to any construction, with its texture and finish offering a luxurious feel and appearance.

The deepest black available—classic, timeless, and sophisticated.



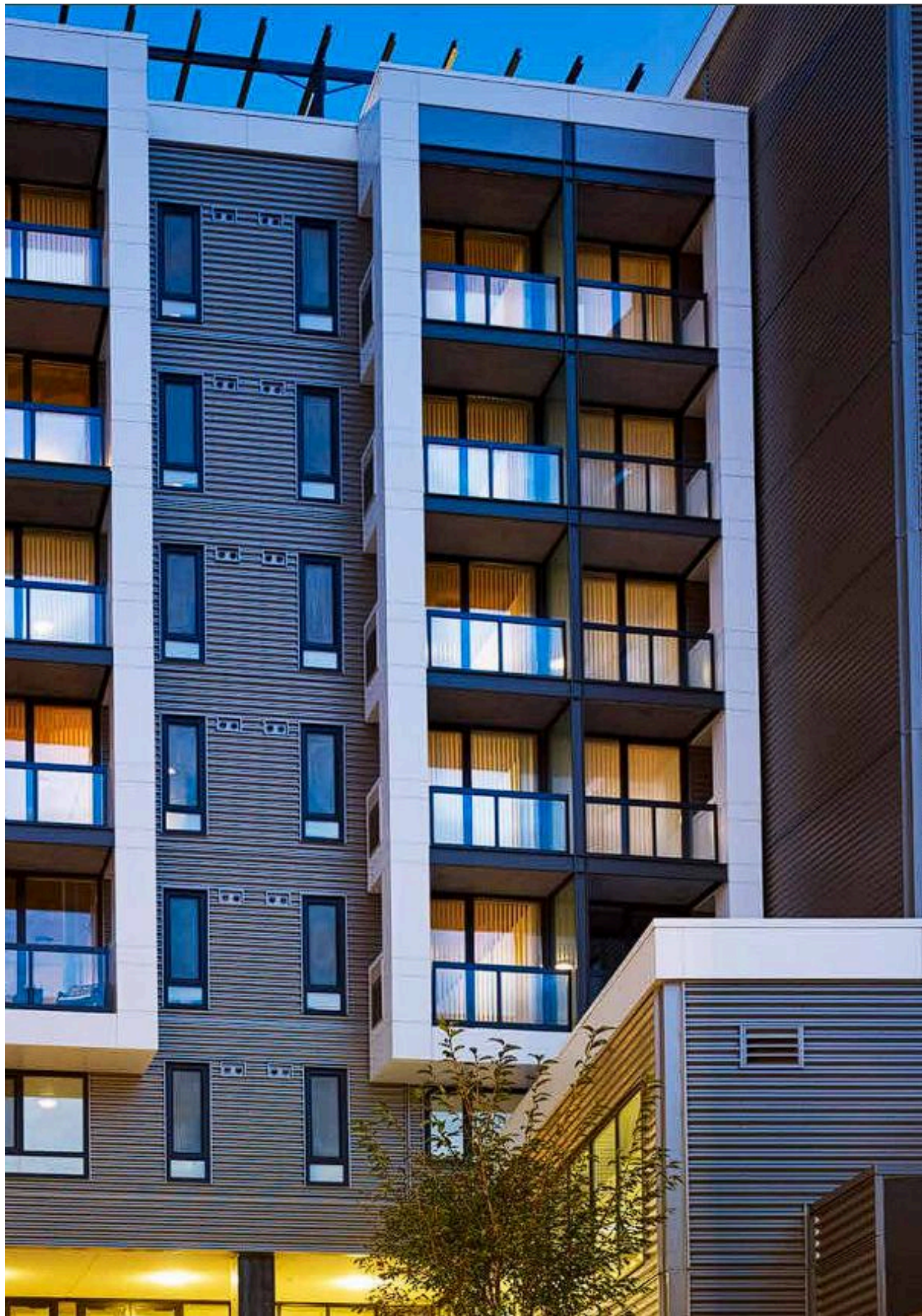
New Technology. New Possibilities.

- 125+ colours and textures
- Minimal maintenance- finish never chipping, cracking or fading away
- Cool technology helps reduce surface heat gain in direct sunlight
- The nano-coating protects against weathering, UV radiation and dirt
- Available for all Wintegra windows and doors
- No added production time





When You Don't Have to Sacrifice Design.



When You Don't Have To Sacrifice Performance



Wintegra Swing Door Handles

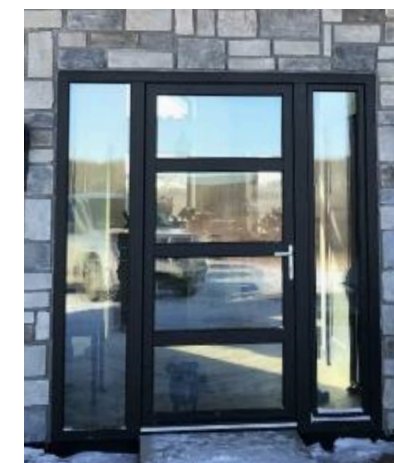
Complete your fenestration design with our carefully selected french door handle selection. *More handles are available for special order.



Luxembourg HOPPE aluminium handle
 - Stock colours: Titanium, Black, Silver, and White
 - Other colours may be available for special order
 - Lock version available



Toulon HOPPE aluminium handle
 - Stock colours: Titanium, Black, Silver, and White
 - Other colours may be available for special order
 - Lock version available





Your New Lifestyle Is Waiting



With Our Heartfelt Appreciation



Head Office

Phone: 604-776-0898

Website

<https://www.wintegra.ca>